

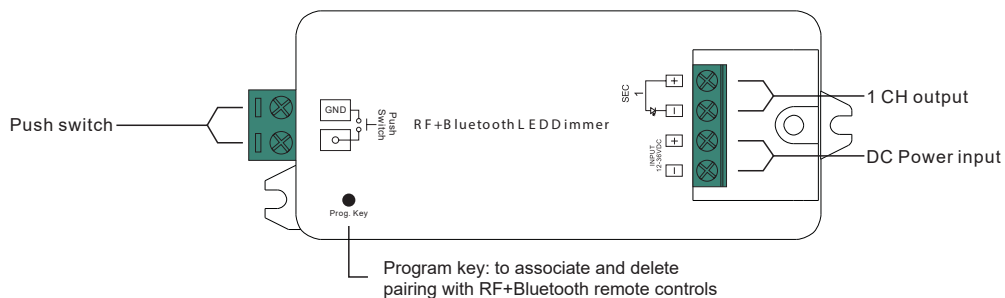
UNIVERSAL RF+BLUETOOTH LED DIMMER

SB.9001CS.04007



Important: Read all instructions before installation.

Introduction to the function



Product data

| No. | Voltage input | Voltage output | Power output | Voltage | Dimension |
|-----|---------------|----------------|---------------|------------------|------------|
| 1 | 12-36VDC | 1x8A | 1x(96-288)W | Constant tension | 95x37x20mm |
| 2 | 12-36VDC | 1x350mA | 1x(4.2-12.6)W | Constant tension | 95x37x20mm |
| 3 | 12-36VDC | 1x700mA | 1x(8.4-25.2)W | Constant tension | 95x37x20mm |

- Universal RF+Bluetooth LED dimmer, radio frequency: 2.4 GHz
- Controlled via both smart apps and remotes, no gateway required
- Quick and easy pairing of the smart App by simply pressing the Prog button.
- Mesh network, much longer control distance, transmit the received signal to nearby devices
- Up to 30m transmission distance between any two nearby devices
- Encrypted two-way communication, fast status feedback, secure and reliable data transmission
- Compatible with universal RF+Bluetooth remote controls, each LED controller can pair with max. 8 remote controls
- Cloud control is available for remote access, works with Amazon Alexa and Google Home
- Waterproof rating: IP20

Safety and Warnings

- DO NOT install with power applied to the device.
- DO NOT expose the device to moisture.

Operazioni

Pair/unpair with RF+Bluetooth remote control

1. Carry out the wiring according to the connection diagram.
2. Pair the LED controller with the RF+Bluetooth remote control: refer to the instructions of the remote control you want to pair with.
3. Delete pairing:
 - (1) Connect the LED controller correctly, turn on.
 - (2) Press and hold the "Prog." button. on the controller for more than 3 seconds (or restore power to the device 8 consecutive times if the button is not accessible to restore the device to factory settings) until the connected light flashes, which means it has been eliminated.

Note: Factory reset will restore all configured parameters of the device on the APP to factory default settings.

Connect the APP

1. Carry out the wiring according to the connection diagram.
2. Download EasyThings APP from iOS APP Store or Android Google Play on your smartphone or tablet by searching for "EasyThings". (As shown in Figure 1)
3. Enable Bluetooth on your smartphone or tablet. (As shown in Figure 2)

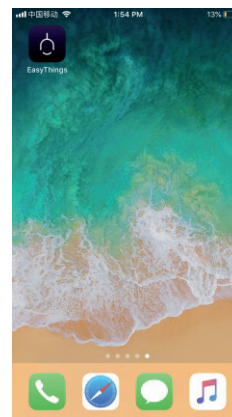


Figura 1

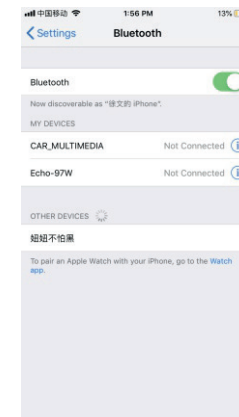


Figura 2

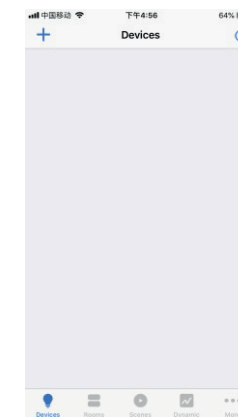


Figura 3

4. Run Easythings APP, tap the Add "+" button on the APP to add the device, then choose "Discover Devices" to discover the device, then briefly press the "Prog." button. on the LED controller twice (or reset the controller power twice continuously) to set the device in association with the APP mode. (As shown in Figure 3 and Figure 4 and Figure 5)

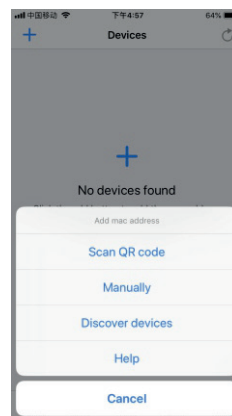


Figura 4

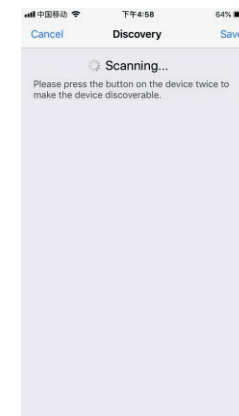


Figura 5

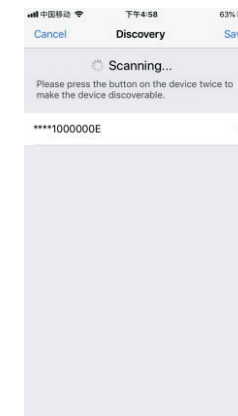


Figura 6

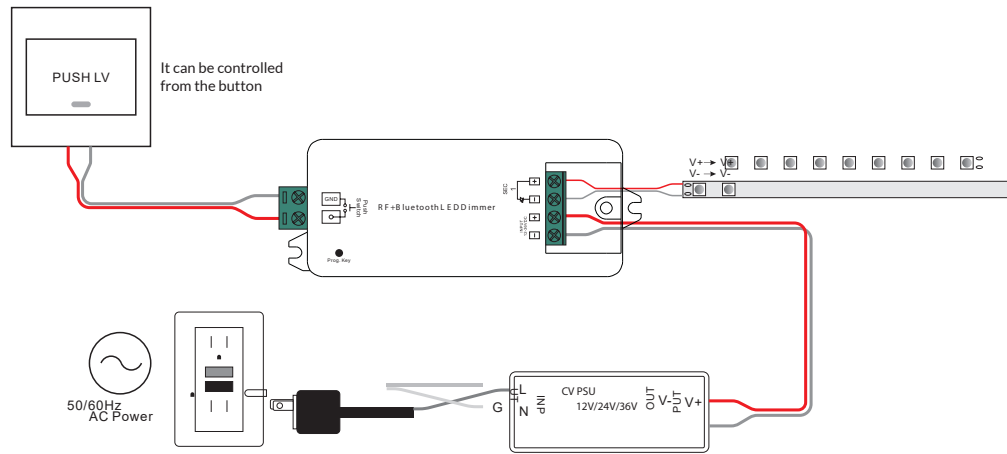
Note: The APP can detect multiple LED controllers at the same time.

5. Once you locate the device(s), tick the device(s) and tap the "Save" button, the device(s) will be added successfully. (as shown in Figure 6)

PRESS DIM:

When connecting with PUSH LV, click the button to turn on/off the connected light. Press and hold the button to increase/decrease the light intensity between 1% and 100%.

Electrical diagram



Product size

